

# STANDARD ROUGH LOCATORS



Rough Locators		106–111
L-Shape Inside with Resin Guide		106
L-Shape Inside		107
I-Shape with Resin Guide		108
L-Shape Outside with Resin Guide		109
L-Shape Outside		110
I-Shape		111



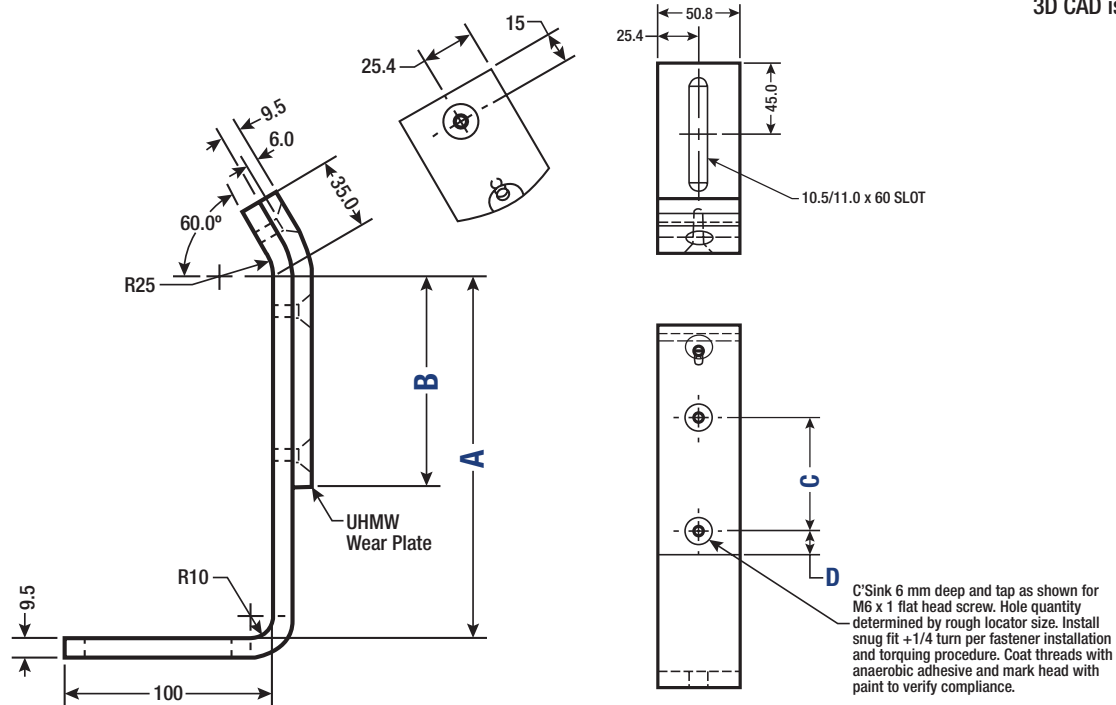
# Rough Locator

L-SHAPED INSIDE WITH RESIN GUIDE



3D CAD is available online.

Standard Rough Locators



Type	Item	Material	Coating
ARL__RP	Wear Plate	UHMW	—
	Main Bracket	A-36 Steel	Black Oxide

Tolerance		
Dimension	Fabrication	Machining
0.0 mm	±1.5 mm	±0.3 mm

Standard NAAMS Rough Locators						
Type	A Length Selection	Spec	A	B	C	D
ARL	075	RP	65.0	55.0	N/A	25.0
	100		90.0			
	125		115.0			
	150		140.0			
	175		165.0	100.0	70.0	15.0
	200		190.0			
	225		215.0			
	250		240.0			

Standard NAAMS specifications are controlled by the NAAMS organization and the latest version of these products will be produced in compliance to: [www.naamsstandards.org](http://www.naamsstandards.org).

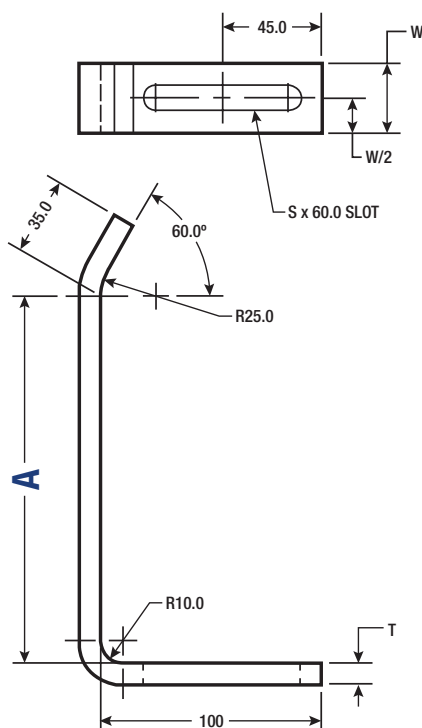
P/N Example (Standard NAAMS):	
Part Number	
Type	Specifications
ARL	075RP
ARL	200RP



# Rough Locator

L-SHAPE INSIDE

3D CAD is available online.



Type	Material	Coating
ARL__R	A-36 Steel	—
ARL__RH	A-36 Steel	Case hardened 58–62 Rc, 1.0–1.5 mm deep

Tolerance		
Dimension	Fabrication	Machining
0.0 mm	±1.5 mm	±0.3 mm

Standard NAAMS Rough Locators											
Type	A Length Selection/Material								T	W	S
	65.0	90.0	115.0	140.0	165.0	190.0	215.0	240.0			
ARL	075R	100R	125R	150R	175R	200R	225R	250R	9.0–10.0	32.0	10.5–11.0
	075RH	100RH	125RH	150RH	175RH	200RH	225RH	250RH			
	076R	101R	126R	151R	176R	201R	226R	251R	6.0–7.0	19.0	9.0–9.5
	076RH	101RH	126RH	151RH	176RH	201RH	226RH	251RH			

Standard NAAMS specifications are controlled by the NAAMS organization and the latest version of these products will be produced in compliance to: [www.naamsstandards.org](http://www.naamsstandards.org).

P/N Example (Standard NAAMS):	
Part Number	
Type	Specifications
ARL	075R
ARL	151RH

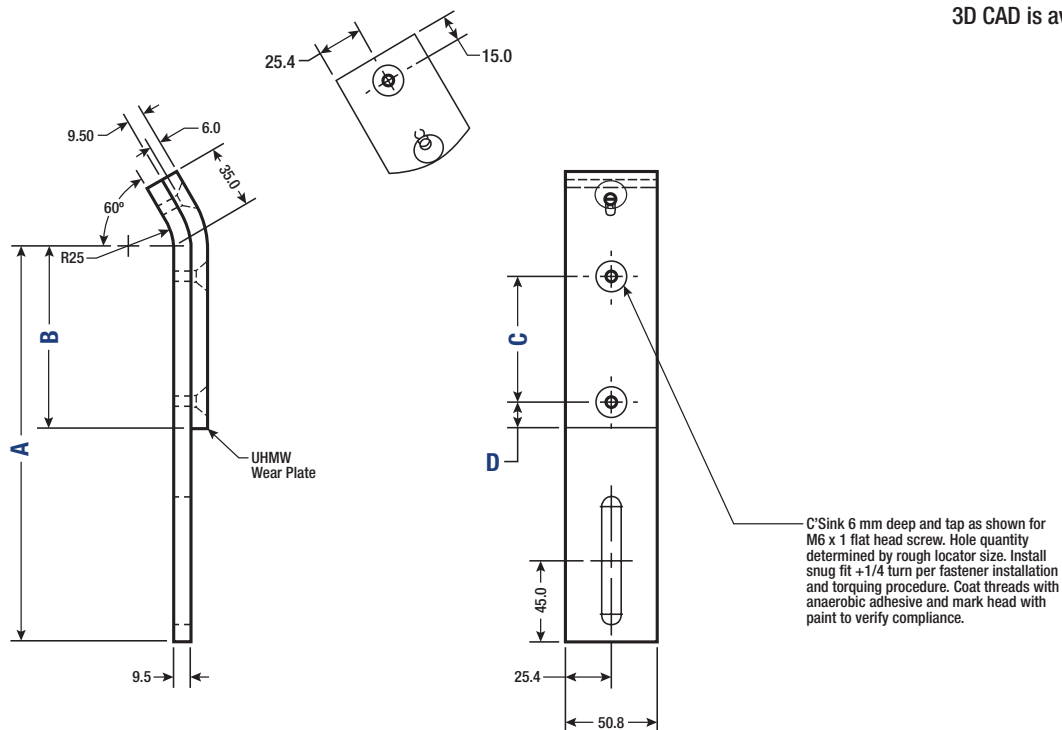
# Rough Locator

I-SHAPE WITH RESIN GUIDE



3D CAD is available online.

Standard Rough Locators



Type	Item	Material	Coating	Tolerance		
ARL__P	Wear Plate	UHMW	—	Dimension	Fabrication	Machining
	Main Bracket	A-36 Steel	Black Oxide	0.0 mm	±1.5 mm	±0.3 mm

Standard NAAMS Rough Locators						
Type	A Length Selection	Spec	A	B	C	D
ARL	145	P	145.0	55.0	N/A	25.0
	170		170.0			
	195		195.0			
	220		220.0	100.0	70.0	15.0
	245		245.0			
	270		270.0			
	295		295.0			
	320		320.0			

Standard NAAMS specifications are controlled by the NAAMS organization and the latest version of these products will be produced in compliance to: [www.naamsstandards.org](http://www.naamsstandards.org).

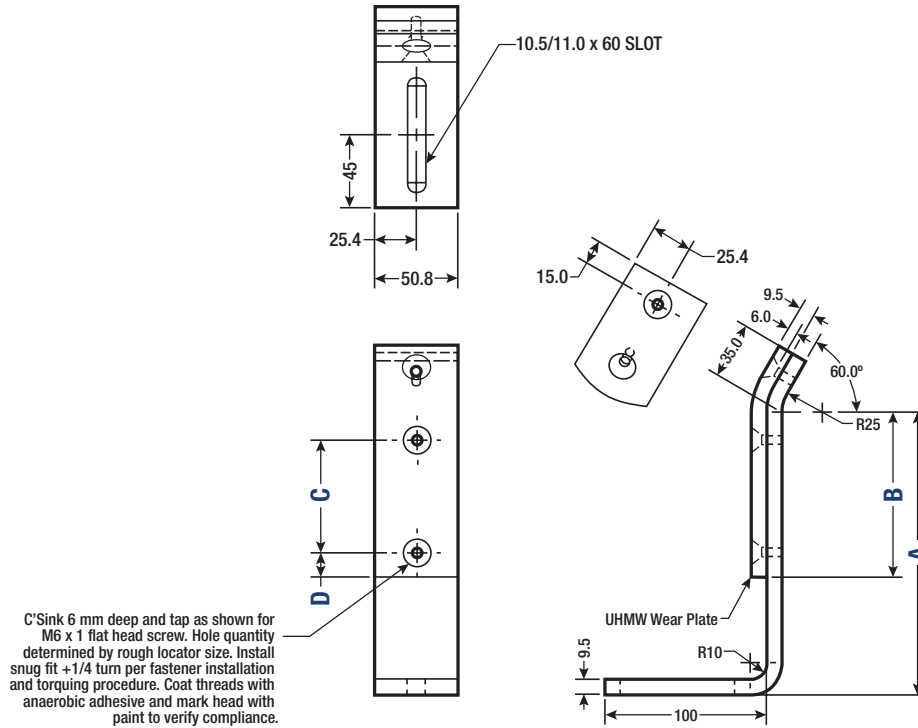
P/N Example (Standard NAAMS):	
Part Number	
Type	Specifications
ARL	145P
ARL	295P



# Rough Locator

L-SHAPED OUTSIDE WITH RESIN GUIDE

3D CAD is available online.



Type	Item	Material	Coating	Tolerance		
				Dimension	Fabrication	Machining
ARL__LP	Wear Plate	UHMW	—	0.0 mm	±1.5 mm	±0.3 mm
	Main Bracket	A-36 Steel	Black Oxide			

Standard NAAMS Rough Locators						
Type	A Length Selection	Spec	A	B	C	D
ARL	075	LP	75.0	55.0	N/A	25.0
	100		100.0			
	125		125.0			
	150		150.0			
	175		175.0	100.0	70.0	15.0
	200		200.0			
	225		225.0			
	250		250.0			

Standard NAAMS specifications are controlled by the NAAMS organization and the latest version of these products will be produced in compliance to: [www.naamsstandards.org](http://www.naamsstandards.org).

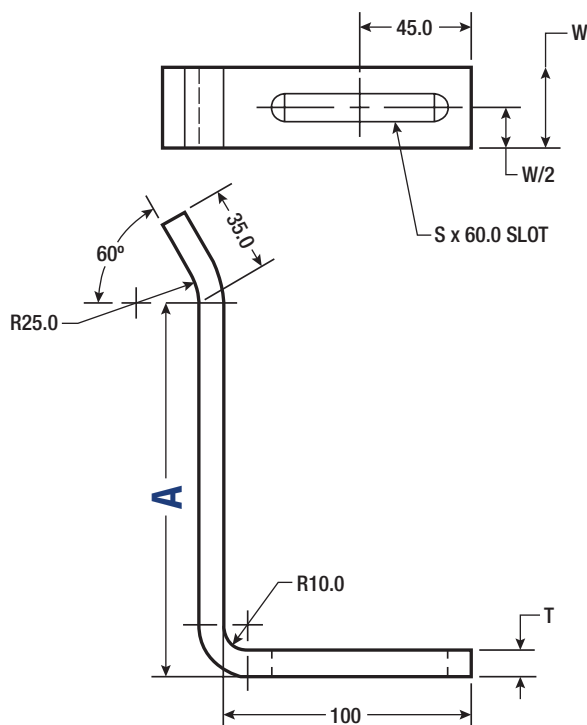
P/N Example (Standard NAAMS):	
Part Number	
Type	Specifications
ARL	075LP
ARL	175LP

# Rough Locator

## L-SHAPED OUTSIDE



3D CAD is available online.



Type	Material	Coating
ARL_ _ _L	A-36 Steel	—
ARL_ _ _LH	A-36 Steel	Case hardened 58–62 Rc, 1.0–1.5 mm deep

Tolerance		
Dimension	Fabrication	Machining
0.0 mm	±1.5 mm	±0.3 mm

Standard NAAMS Rough Locators											
Type	A Length Selection/Material								T	W	S
	75.0	100.0	125.0	150.0	175.0	200.0	225.0	250.0			
ARL	075L	100L	125L	150L	175L	200L	225L	250L	9.0–10.0	32.0	10.5–11.0
	075LH	100LH	125LH	150LH	175LH	200LH	225LH	250LH			
	076L	101L	126L	151L	176L	201L	226L	251L	6.0–7.0	19.0	9.0–9.5
	076LH	101LH	126LH	151LH	176LH	201LH	226LH	251LH			

Standard NAAMS specifications are controlled by the NAAMS organization and the latest version of these products will be produced in compliance to: [www.naamsstandards.org](http://www.naamsstandards.org).

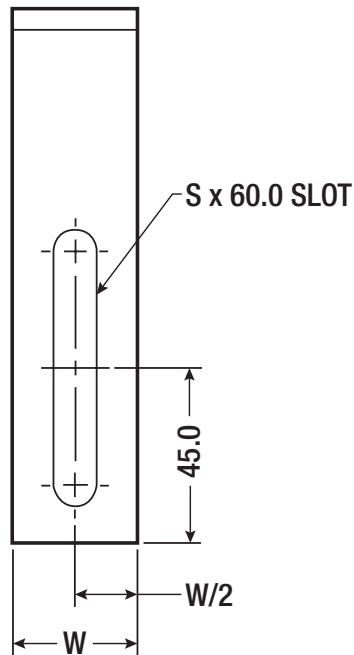
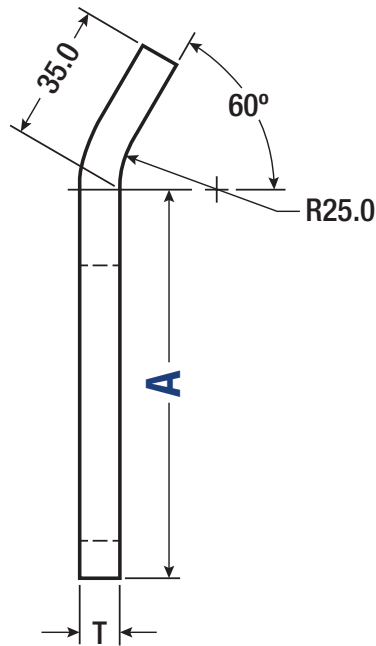
P/N Example (Standard NAAMS):	
Part Number	
Type	Specifications
ARL	176LH
ARL	201L



# Rough Locator

I-SHAPE

3D CAD is available online.



Type	Material	Coating
ARL_ _ _	A-36 Steel	—
ARL_ _ _H	A-36 Steel	Case hardened 58–62 Rc, 1.0–1.5 mm deep

Tolerance		
Dimension	Fabrication	Machining
0.0 mm	±1.5 mm	±0.3 mm

Standard NAAMS Rough Locators											
Type	A Length Selection/Material								T	W	S
	145.0	170.0	195.0	220.0	245.0	270.0	295.0	320.0			
ARL	145	170	195	220	245	270	298	320	9.0–10.0	32.0	10.5–11.0
	145H	170H	195H	220H	245H	270H	298H	320H			
	146	171	196	221	246	271	299	321	6.0–7.0	19.0	9.0–9.5
	146H	171H	196H	221H	246H	271H	299H	321H			

Standard NAAMS specifications are controlled by the NAAMS organization and the latest version of these products will be produced in compliance to: [www.naamsstandards.org](http://www.naamsstandards.org).

P/N Example (Standard NAAMS):	
Part Number	
Type	Specifications
ARL	146H
ARL	321



